



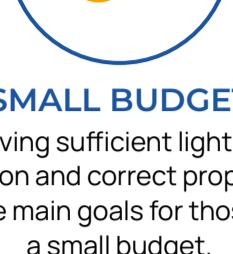
CHANDELIER BUYING GUIDE

To find a correct dining room chandelier size, a typical rule of thumb is to add the length and width of your room and the sum will equal the approximate diameter of your light fixture.

While doing this be mindful of ceiling height and table size, you do not want to exceed the width of the table. Also, keep in mind the shape of your table.

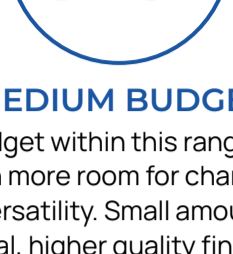


BUDGETING



SMALL BUDGET

Having sufficient light for function and correct proportion are the main goals for those with a small budget.



MEDIUM BUDGET

A budget within this range has much more room for character and versatility. Small amounts of crystal, higher quality finishes,



LARGE BUDGET

Larger budgets have free reign on the possibilities of both luxurious chandeliers and innovative technology on a much grander scale than a typical project usually incurs.

DESIGN TYPES

LINEAR CHANDELIER

Linear chandeliers feature a sleek, elongated design, perfect for illuminating long surfaces like dining tables or kitchen islands. Their streamlined form brings a modern touch to any space, blending functionality with style.



QUOIZEL

Quoizel | GRL539MBK | Greeley Collection | Black | Five Light Island Chandelier



Ideal for long surfaces



Provides even lighting



Modern and versatile design

CRYSTAL CHANDELIER

Crystal chandeliers are synonymous with luxury and elegance, adding a touch of glamour to any setting. The crystals beautifully refract light, creating a dazzling display that enhances the ambiance of the room.



CRYSTORAMA

Crystorama | 1005-PB-CL-S1 Traditional Crystal Collection | Brass - Polished / Cast | Five Light Chandelier



Adds a luxurious feel



Creates a sparkling light effect



Versatile in style, from traditional to contemporary

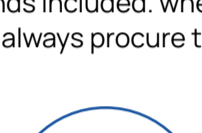
MINI CHANDELIER

Reach out and ask to Custom Make an item according to project specs USA made brands included. whether it's crystal, modern, or any style of chandelier butler lighting can always procure the best options for your custom sized chandelier!

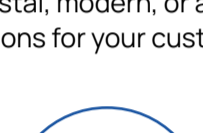


CRYSTORAMA

Crystorama | 9225-BK | Solaris Collection | Black | Three Light Mini Chandelier



Suitable for small spaces



Ornate and elegant



Adds sophistication without overpowering

OVERSIZED CHANDELIER

Mini chandeliers offer the charm and sophistication of a standard chandelier but in a compact form. They are perfect for smaller spaces or as supplementary lighting, delivering elegance without overwhelming the room.



CRYSTORAMA

Crystorama | 9225-BK | Solaris Collection | Black | Three Light Mini Chandelier



Artistic and unique designs



High-quality craftsmanship

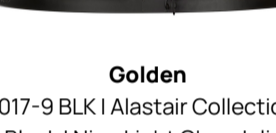


Elevates the aesthetic of any space

PINWHEEL CHANDELIER

WAGON WHEEL

A mesmerizing fusion of contemporary design and timeless allure, these fixtures elevate any space with their striking arrangement of crystal or metal spokes, casting a captivating play of light. Illuminate your surroundings with sophistication and style.



Golden

1017-9 BLK | Alastair Collection | Black | Nine Light Chandelier



Captivating Design



Elegant Illumination



Versatile Décor

OPEN FRAME CHANDELIER

FOYER CHANDELIER

Infuse your space with modern sophistication using these sleek fixtures, characterized by their minimalist design and an airy, open frame construction. Illuminate with style and simplicity, creating a contemporary focal point for any room.



Capital Lighting

541661BI | Bentley Collection | Black | Six Light Foyer Pendant



Minimalist Elegance



Versatile Aesthetics



Ambient Lighting

MODERN CHANDELIER

Elevate your space with contemporary allure through these sleek fixtures, blending clean lines and innovative designs to illuminate your surroundings with style and sophistication. A perfect fusion of functionality and aesthetic appeal for the modern home.



Fredrick Ramond

FR48605DXG | Delfina Collection | Gold, Champ, Glid Leaf | LED Linear Chandelier



Innovative Materials



Energy-Efficient Technology



Customizable Designs

HOW TO INSTALL

- First, as is the case with any electrical job, you should turn off the power in the part of the house you're working in. This will keep you safe during the process.
- The assembly of the actual chandelier will vary depending on which chandelier you've acquired. Most chandeliers will have their own instruction guide.
- Then, you should hang your chandelier. The hanging process will depend on what the instructions that came with your chandelier say, but there are a few methods that can apply no matter the situation.
- Next, you need to wire the chandelier. Typically, there will be instructions on how to do so with your specific chandelier included, but if not there are some general rules to follow.
- All you have to do now is restore the power to the part of the house you were working in and power on your chandelier. Your new chandelier should turn on and light up the room.



ENERGY COSTS

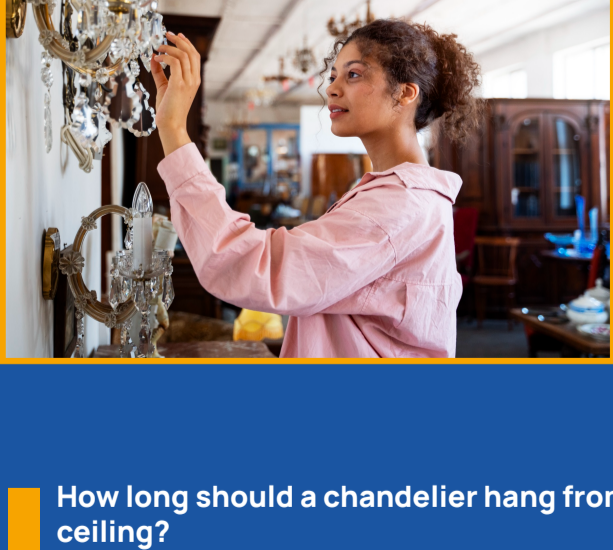
Integrated vs Socket: Integrated solutions are found most commonly in transitional, modern, and contemporary lighting. Ask your lighting specialist if the integrated LED is replaceable. If they are not, the fixture would have to be replaced. Socket based fixtures will best be suited for LED light bulbs. Either solution is great for saving money and having overall better lighting.

WHY BUTLER?

We at Butler Lighting have been fulfilling the lighting needs of our customers since 1948. Whether you need lighting for your home, multi-family project, or restaurant, we can provide whatever lighting that you need. We will work within your budget to get your lighting to a state that you will love. As a family-run business, we put an emphasis on communication and a commitment to hard work. We at Butler work with over 150 vendors to and we can handle any lighting job you can throw at us. If you have a lighting job that needs to be finished, contact us today, and we'll take your lighting to the next level.



CHANDELIER FAQs



How much should you spend on a chandelier?

An overall lighting package for your home will typically cost 1-2% of your home's overall value. It's not uncommon to even go over this amount. Chandeliers are often seen as the focal point of a lighting project and tend to cost more than other lighting related fixtures.

How do I choose the right size chandelier?

The best way to find out how big a chandelier should be in your dining room is to use the following formula. Add the length and width of the room and the sum will equal the approximate diameter of the light fixture you should get.

How long should a chandelier hang from the ceiling?

This will all depend on the chandelier and where it is being hung. A typical chandelier is hung between 30-36 inches off the top of your table. Fovers can vary depending on what's in the room like windows, or if the room has tight spaces.

Can you put a round chandelier over a rectangle table?

There are many combinations that can work when it comes to tables and chandeliers. Putting a round chandelier over a rectangular table can work.

What makes a good chandelier?

What's considered a good chandelier will vary depending on who's buying it. You always want to find a chandelier that will fit your budget that also doesn't sacrifice quality, aesthetics, or functionality to do so.



CONTACT US

VISIT OUR SHOWROOM
HIGH POINT, NC

4380 Regency Dr High Point,
North Carolina,
(336) 889-2344